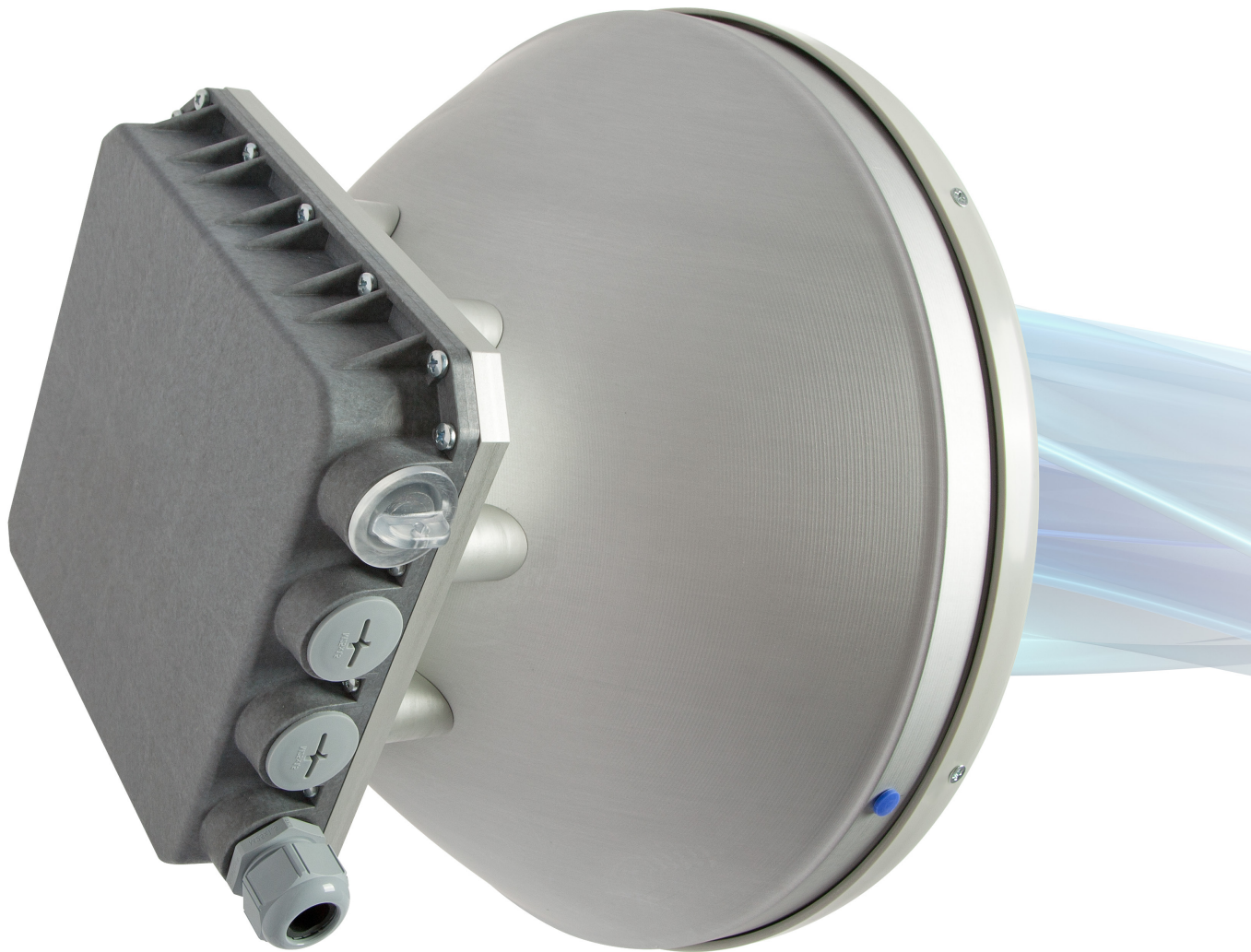




Integra

integrated carrier-grade microwave radio,
delivering up to 1Gbps Full Duplex



- SAF's most powerful modem yet with 3.5MHz to 60MHz channel bandwidth and up to 1024QAM modulation support for universal network upgrades in a compact integrated design
- All-Outdoor radio includes radio, modem, Ethernet network processor, PoE splitter with surge arrestor and integrated antenna in a single hardware design
- Direct radio and antenna integration guarantees weather-proof factory sealing and fast installation
- Carefully selected materials for best corrosion resistance and simplified installation with a 50% weight reduction compared to other microwave systems



Integra is an unbelievably light, energy efficient carrier-grade system that exemplifies an outstanding return on smart engineering - the synergy of high competence in radio electronics and materials science. Integration of next generation microwave radio with high and super high performance antennas into a single unit. It translates into a lower total cost of ownership, as well as less time spent on the installation site, and better reliability of the link even in densely served areas.

| | |
|--------------------------------------|---------------------------------------------------------------------------------------------------------------------------------|
| Capacity | up to 1Gbps throughput with header compression* |
| Frequency bands | 15GHz, 17GHz UL, 18GHz, 23GHz, 24GHz UL, 25GHz, 26GHz, 38GHz, 42GHz and more* |
| Modulation | 4QAM / 16QAM / 32QAM / 64QAM / 128QAM / 256QAM / 512QAM / 1024QAM / Hitless ACM |
| Channel bandwidth | |
| ETSI | from 3.5MHz up to 56MHz, up to 456 Mbps |
| FCC | from 5MHz up to 60MHz, up to 474 Mbps |
| Gigabit Ethernet | |
| 1x RJx45 | Electrical with built-in PoE splitter and surge arrestor |
| 2x SFP | Fibre Optics |
| Service ports | |
| 3.5mm | Audible alignment and RSSI |
| USB B-Type | Terminal Access |
| LED | Power On, Link Synchronization, RSL |
| Managed Gigabit Switch functionality | 802.1Q VLANs with QoS including WRED, shaping and DWRR, Spanning Tree Protocol, Jumbo frames and more* |
| Management | SNMP v1/2c/3, SSH, HTTPS, Serial, Radius, Network Time Protocol |
| Carrier Ethernet functionality | Provider Bridging, MEF9&14, High Efficiency Header Compression, AES 256-bit encryption, MPLS-TP*, OAM*, SyncE, IEEE 1588v2 PTP* |
| Integrated antenna | 0.3m / 1ft, 0.6m / 2ft |
| Weight | 0.6m / 2ft with mount < 7.5kg / 16.5 lbs 0.3m / 1ft with mount < 7.5kg / 16.5 lbs |
| Power consumption | 20W typical, maximum <35W |

* Inquire SAF representative for more information

